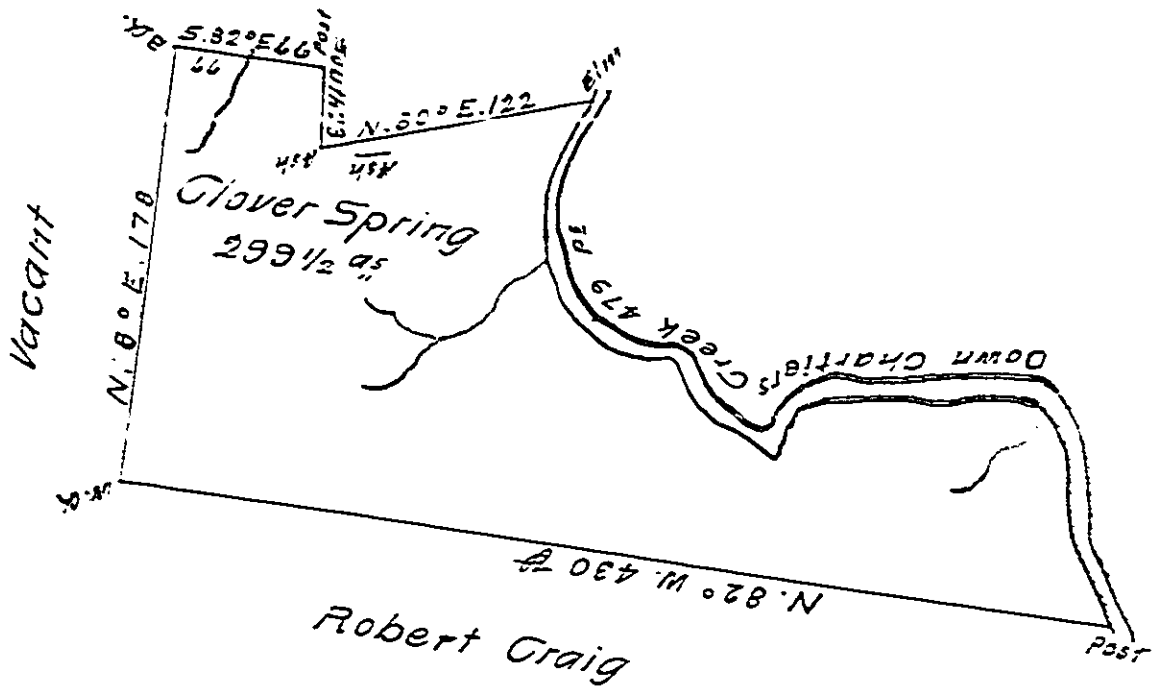


FORM NO. 1.

Courses up Char. Cr.  
Beg. at an Elm

- 5.26. W. 46 f
- 5. 5. W. 18 f
- 5.28. E. 49 f
- 5.60. E. 18 f
- East 21 f
- 5 11 E 28 f
- 5 73 E 22 f
- 5 62 E 10 f
- North 10 f
- N. 17 E. 8 f
- N. 55 E. 10 f
- East 36 f
- N. 58 E. 32 f
- East 57 f
- 5.45 E. 14 f
- South 73 f
- 5.20 E. 27 f
- to a post
- 479



In pursuance of an order No 3137 dated 21<sup>st</sup> April 1769 the above is a draught of a tract of land call'd Clover Spring, containing 299 1/2 ~~ac~~ ~~35~~ acres with the usuall allowance of 6 f C. for roads &c. situated on the West side Monongahela ~~45~~ survey'd for John Mackey 31<sup>st</sup> October 1769 by

James Hendricks —

To John Lukens Esq<sup>r</sup> }  
Surveyor Gen<sup>l</sup> }

IN TESTIMONY that the above is a copy of the original remaining on file in the Department of Internal Affairs of Pennsylvania, made conformably to an Act of Assembly approved the 16th day of February, 1833, I have hereunto set my Hand and caused the Seal of said Department to be affixed at Harrisburg, this twenty eighth day of September 1911

*Henry Houck*  
Secretary of Internal Affairs.